

HARLOW  
COLLEGE

# Adult & Part-time Course Guide

UPSKILL, RETRAIN  
AND FUTURE PROOF  
YOUR CAREER

Courses starting February 2026 - September 2026

# WELCOME FROM OUR PRINCIPAL

## OPEN EVENTS

Come along to our Open Events to find out more about our Adult & Part-time courses. Visit our website to find out more about our upcoming Open Events:

[www.harlow-college.ac.uk](http://www.harlow-college.ac.uk)



## FIND US AT

You can also find us at Harlow College's Open Evenings. Pop by to speak to us about Adult, Part-time and Higher Education courses:





Thank you for considering Harlow College.

At Harlow College, we offer a whole range of courses for adults, with the opportunity to learn online, take classes in College, or a mixture of the two, all designed to help you with your personal or professional development.

We are Ofsted graded Good as a College and have excellent teachers who can help you develop your skills. We also have great links with industry and access to a wide range of professional resources.

Some of our courses are completely free - for example, those on offer through the Government designed Free Courses for Jobs. For others, help may be available towards the cost of your College course, as well as maintenance, with either a 19+ Advanced Learner Loan or a loan or grant from Student Finance England. If you are under 19 at the start of your course, some of these courses will be free.

We value all our learners at Harlow College and welcome applications from all ages and experience. So, whether you are 19 and taking your first steps in further education, or 66 and looking to retrain, we look forward to hearing from you.

**Karen Spencer,**  
**Principal, Harlow College**

# CONTENTS

|           |    |  |
|-----------|----|--|
| <b>GO</b> | 6  | Paying for your course                   |
| <b>GO</b> | 8  | Access to Higher Education               |
| <b>GO</b> | 10 | Skills Bootcamps                         |
| <b>GO</b> | 12 | Higher Education                         |
| <b>GO</b> | 15 | AAT Accounting<br>& Bookkeeping          |
| <b>GO</b> | 15 | Automotive                               |
| <b>GO</b> | 15 | Beauty Therapy                           |
| <b>GO</b> | 19 | Business & Retail                        |
| <b>GO</b> | 19 | Computing &<br>Software Development      |
| <b>GO</b> | 19 | Construction                             |
| <b>GO</b> | 21 | Early Years, Education<br>& Teaching     |
| <b>GO</b> | 23 | English, Maths, ESOL<br>& Digital Skills |
| <b>GO</b> | 23 | Fitness                                  |
| <b>GO</b> | 25 | Green Skills                             |
| <b>GO</b> | 27 | Health, Social Care<br>& Wellbeing       |
| <b>GO</b> | 27 | Security                                 |
| <b>GO</b> | 29 | Skills for Employment                    |



# PAYING FOR YOUR COURSE

The College offers a range of FREE courses designed to help you with your professional or personal development. There are several options of financial help available for the majority of our adult and part-time courses, ranging from 19+ Advanced Learner Loans to our College bursary scheme and financial advice and guidance is always available from our Admissions team.

## **e-Learning Courses:**

Our Level 2 e-learning courses are free if you are aged 19 or over on 1st September 2026, you live in England and meet the residency eligibility criteria. For more information contact our Admissions team.

## **English & Maths:**

English & Maths courses could be free if you don't already have a C/4 grade or equivalent.

## **Level 2 & Level 3 Courses:**

If you are unemployed and looking for work, or earning a gross annual income of £25,750 or less you could be eligible to complete a Level 2 or selected Level 3 accredited course without charge.

If you are 19-23 some Level 2 and Level 3 courses may be free of charge if you do not already have a full Level 2 or 3 qualification.

# DON'T LET MONEY GET IN THE WAY OF YOUR GOALS

## **Free Courses for Jobs Government Scheme:**

The new Free Courses for Jobs Government Scheme means that adults without a full Level 3 qualification like a diploma or A Levels could undertake an accredited course that's fully funded by the UK government. If you earn below £25,750 or are unemployed and looking for work, you will also be able to access these qualifications for free.

## **Skills Bootcamps:**

Skills Bootcamps are flexible courses designed to help adults gain in-demand skills, tailored to employer and sector needs. They're a great opportunity to train in a new industry or progress in your current career.

To be eligible to apply for a Skills Bootcamp, you must be aged 19 or over, have the right to work in the UK and live in Greater Essex.

## **19+ Advanced Learner Loans:**

Advanced Learner Loans are available for courses at Level 3 to 5 and are only paid back once you start earning £27,295 a year (before tax and other deductions).

## **Harlow College 19+ Bursary:**

Support with travel costs, childcare and course materials including essential course, uniform and equipment costs could be available whilst you study if you have either a household annual income (incl means-tested benefits) of less than £30,000.

## **Speak to an Admissions Adviser:**

If you have any questions our Admissions Advisers are on hand to offer financial advice and guidance. Please email: [admissions@harlow-college.ac.uk](mailto:admissions@harlow-college.ac.uk) or call 01279 868100.



# ACCESS TO HIGHER EDUCATION

An Access to Higher Education course is a 1 year pre-university course that prepares adults for study at university. This course is ideal if you have been out of education for a while, are planning a career change or are looking to upskill in your current job. A typical Access course is 2-3 days a week, 9.30am-3pm and is taken by students of all ages and backgrounds.

Most Access to Higher Education students pay for their course with a 19+ Advanced Learner Loan. Any outstanding Advanced Learner Loan balances you owe for an Access to HE course will be 'written off' once you complete a higher education course. This means you do not have to repay it.

It's really easy to apply for an Advanced Learner Loan. Simply contact our friendly Admissions team who will explain everything you need to know and get you started.

## Advanced Learner Loan

Find out more about Advanced Learner Loans [here](#).

# Access to Higher Education

£ Financial support may be available

| Study Mode  | Course Name  | Duration | Start     | Reduced fee<br>(with an Advanced Learner Loan) |                               |
|-------------|--|----------|-----------|--|-------------------------------|
| £ On campus | Access to Medicine                                   | 1 year   | Sept 2026 | £3384  | <a href="#">Find out more</a> |
| £ On campus | Access to Health Professions (Nursing and Midwifery) | 1 year   | Sept 2026 | £3384  | <a href="#">Find out more</a> |
| £ On campus | Access to Psychology and Counselling                 | 1 year   | Sept 2026 | £3384  | <a href="#">Find out more</a> |
| £ On campus | Access to Construction and the Built Environment     | 1 year   | Sept 2026 | £3928  | <a href="#">Find out more</a> |
| £ On campus | Access to Criminal Justice and Policing              | 1 year   | Sept 2026 | £3022  | <a href="#">Find out more</a> |



**"I felt empowered, like I can do anything!"**

After completing her Access to Higher Education course Amy is now off to University to study Nursing.

[Read more](#)

# SKILLS BOOTCAMPS

Skills Bootcamps are flexible courses designed to help adults gain in-demand skills, tailored to employer and sector needs. They're a great opportunity to train in a new industry or progress in your current career.

These courses are part of the Government's Skills for Life programme and are proudly funded by Essex County Council and the Department for Education (DfE).

To be eligible to apply for a Skills Bootcamp, you must:

Be aged 19 or over

Have the right to work in the UK

Be a resident of Greater Essex (if you reside outside of Greater Essex but are employed within Greater Essex you may still be eligible for funding)

## **Our Skills Bootcamps:**

Skills Bootcamp in  
Health & Social Care

[Find out more](#)



**Fast-track your future with  
up to 16 weeks of fully  
funded training.**

Go to: [harlow-college.ac.uk/skills-bootcamps](https://harlow-college.ac.uk/skills-bootcamps)

# HIGHER EDUCATION

At Harlow College, we offer a whole range of courses for adults, with the opportunity to learn online, take classes in College, or a mixture of the two, all designed to help you with your personal or professional development.

Our Higher Education courses are flexible, allowing you to fit your study around personal commitments or a part-time job.

We offer Higher Education courses at Levels 4 and 5. These include Higher National Certificates (HNCs), Higher National Diplomas (HNDs) and Professional Diplomas.

These qualifications are designed to give you the skills to put your knowledge to practical use.

HNCs and HNDs are highly valued by employers and can also count towards membership of professional bodies and other employer organisations.

If you plan to study Higher Education at Harlow College, you may not have to pay for tuition fees upfront. Help may be available towards the cost of your college course as well as maintenance with either a 19+ Advanced Learner Loan or a loan or grant from Student Finance England.

A smiling woman with dark hair, wearing a blue hoodie and a lanyard that says "HIGHER EDUCATION", is looking towards the camera. In the background, a computer monitor is visible. The image is overlaid with a dark blue semi-transparent rectangle containing a light blue circle and a dark blue circle.

**HARLOW  
COLLEGE**

**HIGHER  
EDUCATION  
DIGITAL GUIDE  
2026-27**

[View guide online](#)



## Accounting & Bookkeeping

| Study Mode           | Course Name             | Duration  | Start     | Full Fee |                               |
|----------------------|-------------------------|-----------|-----------|----------|-------------------------------|
| £ On campus & Online | AAT Level 1 Bookkeeping | 12 weeks  | 9 Sept    | £311     | <a href="#">Find out more</a> |
| £ On campus & Online | AAT Level 2 Accounting  | 10 months | 8&10 Sept | £1216    | <a href="#">Find out more</a> |
| £ On campus & Online | AAT Level 3 Accounting  | 10 months | 17 Sept   | £3076    | <a href="#">Find out more</a> |
| £ On campus & Online | AAT Level 3 Bookkeeping | 4 months  | 4 Sept    | £1491    | <a href="#">Find out more</a> |


Fees includes tuition, AAT membership fees and one assessment fee per unit.

## Automotive

| Study Mode  | Course Name                                | Duration | Start   | Full Fee |                               |
|-------------|--|----------|---------|----------|-------------------------------|
| £ On campus | Level 2 Light Vehicle Maintenance & Repair | 1 year   | 21 Sept | £870     | <a href="#">Find out more</a> |

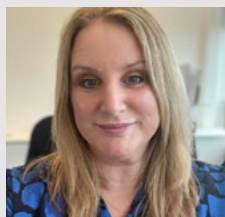
## Beauty Therapy & Hairdressing

| Study Mode  | Course Name             | Duration | Start | Full Fee |                               |
|-------------|-------------------------|----------|-------|----------|-------------------------------|
| £ On campus | Level 1 Nail Treatments | 6 weeks  | Sept  | £216     | <a href="#">Find out more</a> |

\*Subject to eligibility  Financial support may be available.  
In some cases these course could be free!



**Penn**  
SPORT



"The Level 5 Leadership and Management course fitted perfectly around my job. It's given me the tools and knowledge I need to be an effective manager."

[Read more](#)

## Business & Retail


| Study Mode           | Course Name   | Duration   | Start    | Full Fee |                               |
|----------------------|---|------------|----------|----------|-------------------------------|
| £ On campus & Online | Level 5 CMI Leadership and Management                                     | 1 year     | 14 Oct   | £724     | <a href="#">Find out more</a> |
| £ Online             | Level 2 Understanding Climate Change and Environmental Awareness          | 8-12 weeks | Any time | Free*    | <a href="#">Find out more</a> |
| £ Online             | Level 2 Mental Health First Aid & Mental Health Advocacy in the Workplace | 8-12 weeks | Any time | Free*    | <a href="#">Find out more</a> |

## Computing & Software Development

| Study Mode  | Course Name        | Duration | Start  | Full Fee |                               |
|-------------|--------------------|----------|--------|----------|-------------------------------|
| £ On campus | Level 2 App Design | 5 months | 24 Apr | £180     | <a href="#">Find out more</a> |

## Construction

| Study Mode  | Course Name   | Duration | Start            | Full Fee |                               |
|-------------|---|----------|------------------|----------|-------------------------------|
| £ On campus | CSCS Preparing to Work in Construction (Bright Futures Training Centre, Harlow) | 10 days  | 16 Apr<br>18 May | Free*    | <a href="#">Find out more</a> |

\*Subject to eligibility  Financial support may be available.  
In some cases these course could be free!



**HARLOW  
COLLEGE**

# Free online short courses for adults.


Learn at your own pace,  
anywhere, anytime.

[www.harlow-college.ac.uk/elearning](http://www.harlow-college.ac.uk/elearning)

[Apply now](#)

# Early Years, Education & Teaching

| Study Mode           | Course Name   | Duration            | Start    | Full Fee  |                               |
|----------------------|---|---------------------|----------|-----------|-------------------------------|
| £ Online             | Level 2 Behaviour That Challenges                       | 8-12 weeks          | Any time | Free*     | <a href="#">Find out more</a> |
| £ Online             | Level 2 Understanding Autism                            | 8-12 weeks          | Any time | Free*     | <a href="#">Find out more</a> |
| £ Online             | Level 3 Certificate in Understanding Autism             | 18-20 weeks         | Any time | £1587.60  | <a href="#">Find out more</a> |
| On campus            | Level 3 Teacher Training: Education & Training          | 30 weeks            | 24 Feb   | £450      | <a href="#">Find out more</a> |
| £ On campus          | Level 4 Teacher Training: Education & Training          | 30 weeks            | 21 Sept  | £950      | <a href="#">Find out more</a> |
| Online and On campus | Level 3 TAQA (Training, Assessment & Quality Assurance) | 4 weeks to 6 months | 13 Apr   | from £565 | <a href="#">Find out more</a> |
| Online and On campus | Level 4 TAQA (Training, Assessment & Quality Assurance) | 4 weeks to 1 year   | 14 Apr   | from £390 | <a href="#">Find out more</a> |

\*Subject to eligibility  Financial support may be available. In some cases these course could be free!



OXFORD FULLY REVISED ENGLISH DICTIONARY FOR SCHOOLS

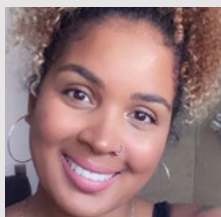
OXFORD

## English, Maths, ESOL & Digital Skills

| Study Mode  | Course Name                                  | Duration    | Start   | Full Fee  |                               |
|-------------|--|-------------|---------|-----------|-------------------------------|
| £ On campus | Functional Skills English                    | 14 weeks    | 14 Sept | Free*     | <a href="#">Find out more</a> |
| £ On campus | Functional Skills Maths                      | 12-14 weeks | 14 Sept | Free*     | <a href="#">Find out more</a> |
| £ On campus | GCSE English                                 | 1 year      | 14 Sept | Free*     | <a href="#">Find out more</a> |
| £ On campus | GCSE Maths                                   | 1 year      | 14 Sept | Free*     | <a href="#">Find out more</a> |
| £ On campus | ESOL (English as a Second or Other Language) | Flexible    | 14 Sept | from £150 | <a href="#">Find out more</a> |
| £ On campus | Introduction to Digital Skills               | 10 days     | 20 Apr  | Free*     | <a href="#">Find out more</a> |

## Fitness

| Study Mode  | Course Name             | Duration | Start   | Full Fee |                               |
|-------------|-------------------------|----------|---------|----------|-------------------------------|
| £ On campus | Level 2 Gym Instructing | 1 year   | 21 Sept | £390     | <a href="#">Find out more</a> |



Jade achieved a Grade 5 in Maths with Harlow College and is now off to Anglia Ruskin University to pursue her dream career as a Midwife.


[Read more](#)

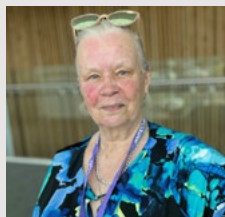
\*Subject to eligibility £ Financial support may be available. In some cases these course could be free!



# Green Skills

| Study Mode  | Course Name   | Duration               | Start | Full Fee |                               |
|-------------|---|------------------------|-------|----------|-------------------------------|
| £ On campus | Level 3 Requirements for the Design & Installation of Domestic and Small Commercial Electric Vehicle Charging Installations | 2.5 days or 3 evenings | Sept  | £350     | <a href="#">Find out more</a> |
| £ On campus | Level 3 Installation and Maintenance of Small Solar Photovoltaic Systems  | 3.5 days or 6 evenings | Sept  | £750     | <a href="#">Find out more</a> |
| £ On campus | Level 3 Design, Installation and Commissioning of Small Electrical Energy Storage Systems                                   | 2.5 days or 3 evenings | Sept  | £450     | <a href="#">Find out more</a> |

\*Subject to eligibility  Financial support may be available. In some cases these course could be free!



### **"I think of myself as a lifelong learner"**

"I like to keep active and learn new things so when the opportunity came up to study a counselling course I thought, let's go for it!"


[Read more](#)

## Health, Social Care & Wellbeing

| Study Mode  | Course Name   | Duration   | Start    | Full Fee |                               |
|-------------|---|------------|----------|----------|-------------------------------|
| £ On campus | Skills Bootcamp in Health and Social Care                                 | 10 weeks   | 17 Sept  | Free*    | <a href="#">Find out more</a> |
| £ On campus | Level 2 Counselling   | 16 weeks   | 21 Sept  | £360     | <a href="#">Find out more</a> |
| £ On campus | Level 3 Counselling   | 26 weeks   | 21 Sept  | £2225    | <a href="#">Find out more</a> |
| £ Online    | Level 2 Children & Young People's Mental Health                           | 8-12 weeks | Any time | Free*    | <a href="#">Find out more</a> |
| £ Online    | Level 2 Mental Health First Aid & Mental Health Advocacy in the Workplace | 8-12 weeks | Any time | Free*    | <a href="#">Find out more</a> |
| £ Online    | Level 2 Nutrition & Health  | 8-12 weeks | Any time | Free*    | <a href="#">Find out more</a> |
| £ Online    | Level 2 Understanding Climate Change and Environmental Awareness          | 8-12 weeks | Any time | Free*    | <a href="#">Find out more</a> |

## Security

| Study Mode  | Course Name                                 | Duration | Start  | Full Fee |                               |
|-------------|---|----------|--------|----------|-------------------------------|
| £ On campus | Preparing to Work in Security (SIA Licence) | 20 days  | 15 Apr | Free*    | <a href="#">Find out more</a> |

\*Subject to eligibility  Financial support may be available. In some cases these course could be free!



# Skills for Employment

| Study Mode  | Course Name  | Duration | Start            | Full Fee |                               |
|-------------|--|----------|------------------|----------|-------------------------------|
| £ On campus | CSCS Preparing to Work in Construction (CSCS card) | 10 days  | 21 Sept          | Free*    | <a href="#">Find out more</a> |
| £ On campus | Preparation for Employment                         | 5 days   | 16 Apr<br>18 May | Free*    | <a href="#">Find out more</a> |
| £ On campus | Preparing to Work in Health & Care                 | 11 days  | 20 Apr           | Free*    | <a href="#">Find out more</a> |
| £ On campus | Preparing to Work in Security (SIA Licence)        | 20 days  | 15 Apr           | Free*    | <a href="#">Find out more</a> |
| £ On campus | Preparing to Work in Customer Service              | 4 days   | 19 Mar           | Free*    | <a href="#">Find out more</a> |
| £ On campus | Supporting Older Workers into Work                 | 11 days  | 20 Apr           | Free*    | <a href="#">Find out more</a> |
| £ Online    | Preparing to Work in the Prison Service            | 6 days   | 14 Apr           | Free*    | <a href="#">Find out more</a> |
| £ On campus | Preparing to Work in Schools                       | 10 days  | 5 May            | Free*    | <a href="#">Find out more</a> |
| £ On campus | Warehousing & Storage                              | 10 days  | 26 May           | Free*    | <a href="#">Find out more</a> |
| £ On campus | Introduction to Digital Skills                     | 10 days  | 20 Apr           | Free*    | <a href="#">Find out more</a> |



Bright Futures is Harlow College's Adult Training Centre delivering training courses to upskill, retrain and support adults on their employment journey across the South East and East of England.

[VIEW COURSES](#)

[FIND US ON  
GOOGLE MAPS](#)

01279 868173

[www.harlow-college.ac.uk/brightfutures](http://www.harlow-college.ac.uk/brightfutures)  
[brightfutures@harlow-college.ac.uk](mailto:brightfutures@harlow-college.ac.uk)

PART OF  
**HARLOW  
COLLEGE**



# HOW TO APPLY

UPSKILL, RETRAIN  
AND FUTURE PROOF  
YOUR CAREER



## Online

Visit: [www.harlow-college.ac.uk/adults](http://www.harlow-college.ac.uk/adults) to browse our courses.

Alternatively, you can simply click the 'find out more' button next to the course you'd like to apply for in this Course Guide.

Fill out an application form online.

Some of our courses require a pre-assessment. If this is the case, you will be asked to submit your contact details and we will be in touch to arrange this with you.



## Phone

Call 01279 868100 to speak to our friendly Admissions Team.

Our phone lines are open:  
Monday to Thursday 8.45am-5pm  
Fridays 8.45am-4.30pm

You can also email our Admissions team:  
[admissions@harlow-college.ac.uk](mailto:admissions@harlow-college.ac.uk)

# HARLOW COLLEGE

01279 868100

[www.harlow-college.ac.uk](http://www.harlow-college.ac.uk)

Harlow College  
Velizy Avenue  
Harlow  
CM20 3LH

All information printed in this guide is correct  
at time of publishing February 2026.  
Course fees are subject to change.